

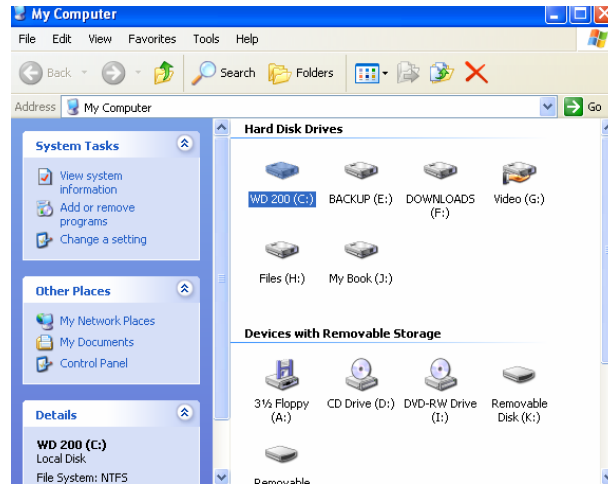
HOW TO CHECK THE HARD DISK FOR ERROR.

Disclaimer:

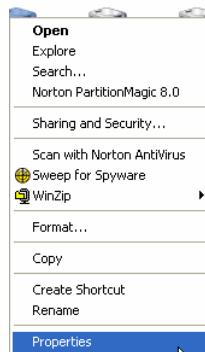
Although I have performed these steps many, many times without any problems I can not 100% guarantee that you won't have a problem. Therefore I'm not responsible for any computer problems you have as a result of following this procedures.

You should always have a current backup of your system and your files.

1. From the start menu or from the desktop open "My Computer" Yours will look a little different than mine.

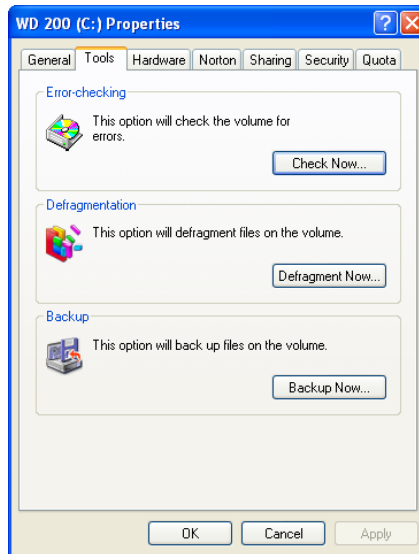


2. right click on the hard drive you wish to check and choose properties. The primary drive is drive C:\.

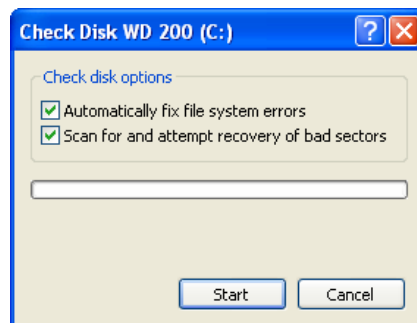


HOW TO CHECK THE HARD DISK FOR ERROR.

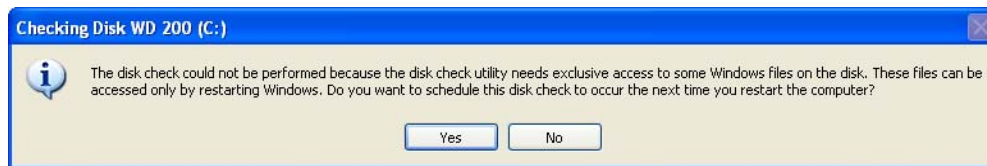
- From the properties menu click on the tools tab and under error checking click check now.



- Put check marks in both boxes and click "Start"



- When this box pops up click yes.



- From your start menu select to shut down your computer and then choose the restart option. This will take anywhere from 30 minutes up to several hours depending on the size of the hard drive, how much data is on it and if it finds any problems that need repairing.